

Galectin 7 Antibody
Rabbit mAb
Catalog # AP91888**Specification**

Galectin 7 Antibody - Product Information

Application	WB, IHC, ICC, IP
Primary Accession	P47929
Clonality	Monoclonal
Other Names	
Galectin-7; Gal-7; HKL-14; PI7; LGALS7; PIG1;	
Isotype	Rabbit IgG
Host	Rabbit
Calculated MW	15075 Da

Galectin 7 Antibody - Additional Information

Dilution	WB~~1:1000 IHC~~1:100~500 ICC~~N/A IP~~N/A
Purification	Affinity-chromatography
Immunogen	A synthesized peptide derived from human Galectin 7
Description	Could be involved in cell-cell and/or cell-matrix interactions necessary for normal growth control. Pro-apoptotic protein that functions intracellularly upstream of JNK activation and cytochrome c release.
Storage Condition and Buffer	Rabbit IgG in phosphate buffered saline , pH 7.4, 150mM NaCl, 0.02% sodium azide and 50% glycerol. Store at +4°C short term. Store at -20°C long term. Avoid freeze / thaw cycle.

Galectin 7 Antibody - Protein Information**Name** LGALS7**Synonyms** PIG1**Function**

Could be involved in cell-cell and/or cell-matrix interactions necessary for normal growth control. Pro-apoptotic protein that functions intracellularly upstream of JNK activation and cytochrome c release.

Cellular Location

Cytoplasm. Nucleus. Secreted. Note=May be secreted by a non-classical secretory pathway

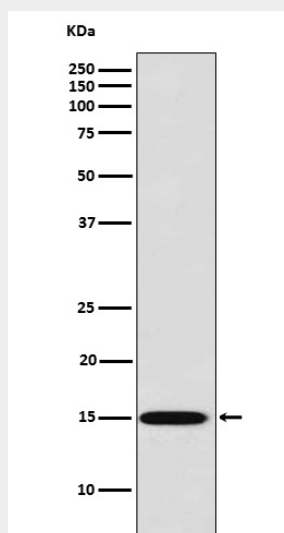
Tissue Location

Mainly expressed in stratified squamous epithelium.

Galectin 7 Antibody - Protocols

Provided below are standard protocols that you may find useful for product applications.

- [Western Blot](#)
- [Blocking Peptides](#)
- [Dot Blot](#)
- [Immunohistochemistry](#)
- [Immunofluorescence](#)
- [Immunoprecipitation](#)
- [Flow Cytometry](#)
- [Cell Culture](#)

Galectin 7 Antibody - Images

Western blot analysis of Galectin 7 expression in HACAT cell lysate.